

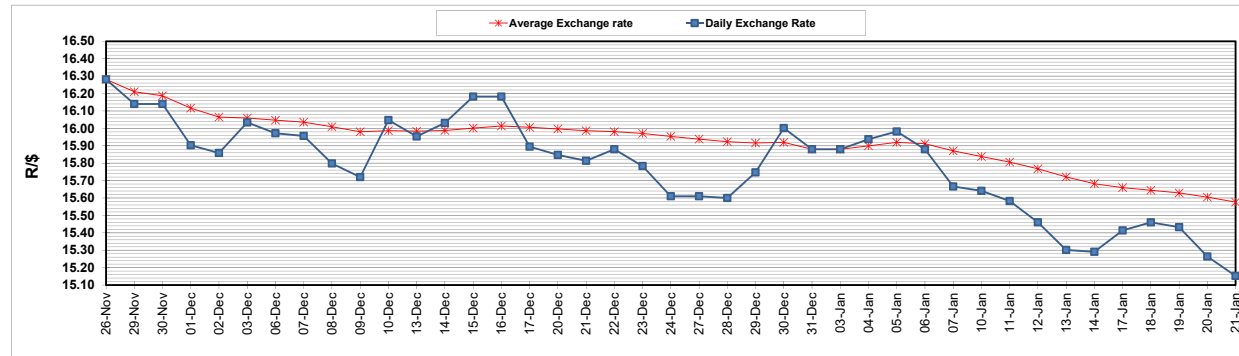
| | PETROL 95 ULP | PETROL 93 ULP & LRP | DIESEL 0.05% | DIESEL 0.005% | ILL. PAR. |
|--|---------------|---------------------|--------------|---------------|-----------|
| GAUTENG PUMP PRICE (SA c/l) AS FROM 05/01/2022 | 1,961.000 | 1,936.000 | - | - | - |
| WHOLESALE PRICE (SA c/l) AS FROM 05/01/2022 | - | - | 1,724.680 | 1,728.080 | 1,096.688 |
| SINGLE NATIONAL MAXIMUM RETAIL PRICE | - | - | - | - | 1,394.000 |
| BASIC FUEL PRICE - 21/01/2022 (SA c/l) | 984.270 | 972.798 | 1,000.467 | 1,002.375 | 999.126 |
| PRESS RELEASE CONTRIBUTION TO BFP 05/01/2022 - 21/01/2022 (SA c/l) | 903.470 | 888.470 | 885.630 | 889.030 | 875.128 |
| UNIT OVER/(UNDER) RECOVERY - 21/01/2022 (SA c/l) | (80.800) | (84.328) | (114.837) | (113.345) | (123.998) |
| AVERAGE BASIC FUEL PRICE 31/12/2021 - 21/01/2022 | 972.978 | 960.999 | 981.823 | 983.968 | 979.669 |
| AVERAGE UNIT OVER/(UNDER) RECOVERY 31/12/2021 - 21/01/2022 | (56.345) | (58.804) | (83.068) | (81.438) | (91.229) |

ANALYSIS MOVEMENT OF AVERAGE OVER/(UNDER) RECOVERY

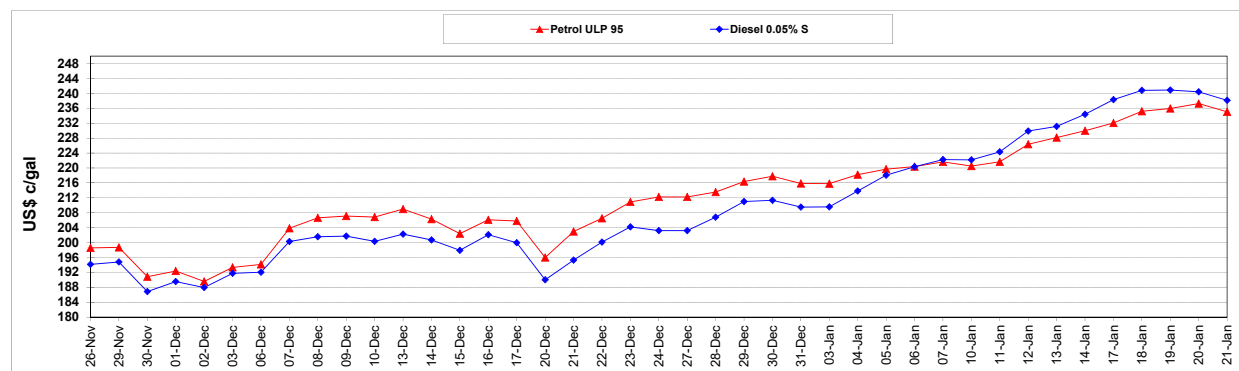
| | PETROL 95 | PETROL 93 | DIESEL 0.05% | DIESEL 0.005% | ILL. PAR. |
|--|-----------|-----------|--------------|---------------|-----------|
| - MOVEMENT IN INTERNATIONAL PRODUCT PRICES | (77.777) | (79.972) | (104.694) | (103.112) | (112.807) |
| - MOVEMENT IN EXCHANGE RATE | 21.432 | 21.168 | 21.626 | 21.674 | 21.579 |
| AVERAGE UNIT OVER/(UNDER) RECOVERY 31/12/2021 - 21/01/2022 | (56.345) | (58.804) | (83.068) | (81.438) | (91.229) |

R/\$ EXCHANGE RATE - (R/\$15.1523 - 21/01/2022)

EXCHANGE RATE USED IN BASIC FUEL PRICE



INTERNATIONAL PRODUCT PRICES OF BASKET USED IN BASIC FUEL PRICE



BASIC FUEL PRICE IN SA CENTS PER LITRE

